

# CHROMAPAVE® HOT MIX COLORANTS

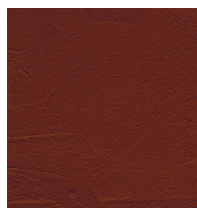
## Ground-Breaking Hot Mix Colorants

Everyone has black asphalt in their driveway, parking lot or highways, but you can enhance your pavement with ChromaPave hot mix colorants. Differentiate yourself in the asphalt market by offering beautiful, earthy colors to your customers and end users!

ChromaPave hot mix colorants can be used in any asphalt application where color identification is required. For example: highway lane designation (car pool and HOV), safety purposes (crosswalks, no-stopping areas and fire lanes), bus lane or loading zones, school zone designations, pedestrian walkways or bicycle paths and car parks.

ChromaScape makes the job easy for you with clean packaging and ready-to-use materials that mix right into your asphalt. ChromaScape will work with you to provide a specific mixing formula recommendation based on your application process and location.

### Colors Available



Brick Red



Everglade Green

### For Optimal Applications

If using ChromaPave hot mix colorants for hot mix applications, product should be mixed at asphalt plant. ChromaPave hot mix colorants should be added to the hot mix during the mixing process at the mill. ChromaPave hot mix colorants should be added after the heated aggregate (must meet cleanliness and/or sand equivalency numbers) is already in the mill, but prior to the addition of oil. The mixing time recommended should be 60 seconds, or at least twice the standard time for a hot mix

of product made without ChromaPave hot mix colorants.

Keep out of reach of children. Avoid prolonged skin contact. Do not take internally. Store, handle and dispose per Safety Data Sheets (SDS) requirements.

### Product Shelf Life and Storage

ChromaPave hot mix colorants should be stored in a dry place.

### Warranty

ChromaPave hot mix colorants are warranted to be of uniform quality within manufacturing tolerances. Since control is not exercised over their use, no warranty, expressed or implied, is made to the effects of such use. Seller's and manufacturer's obligation under this warranty shall be limited to refunding the purchase price of the portion of the material purchased from seller and proven to be defective. These products are sold to perform one particular purpose - the purpose of coloring asphalt sealer under reasonable conditions and using reasonably standard methods per industry norms. No other warranty, for any other use or application, or for the performance of the product under any other conditions, is made or intended. Any warranty of fitness for any other particular purpose is hereby disclaimed.

**Legal Disclaimer:** We do not guarantee performance and the user should perform their own testing to assess suitability in their application. User assumes all other risk and liability resulting from use of this product. No claims, representations or warranties, whether express or implied, are made by our company as to the safety, reliability, durability and performance of any of our company's products. In no event shall our company be liable for any direct, indirect, punitive, incidental, special consequential damages, to property or life, whatsoever arising out of or connected with the use or misuse of our products.

### These colorants can be used for:

- Highway lane designation (car pool, HOV, etc.)
- Safety purposes (crosswalks, fire lanes, etc.)
- Bus lane or loading zones
- Pedestrian walkways and bicycle paths
- Car parks

[service@chromascape.com](mailto:service@chromascape.com)

[chromascape.com](http://chromascape.com)

Phone 888.421.0010

CHROMASCAPE®