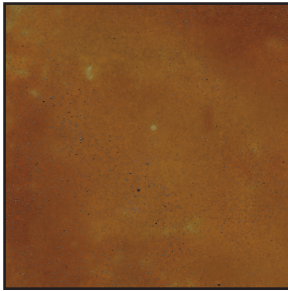
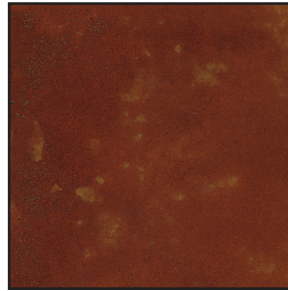


Chemical Stain

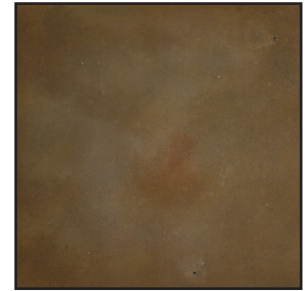
INNOTECH CHEMICAL STAIN APPLIED TO A GRAY BASE CEMENT



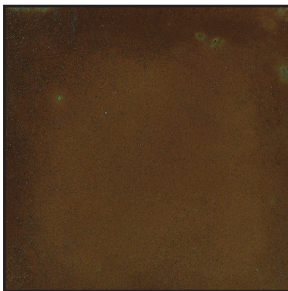
Ember



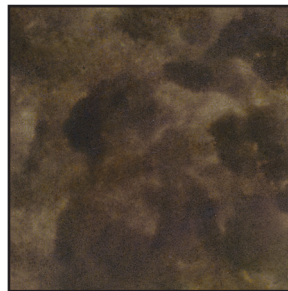
Adobe



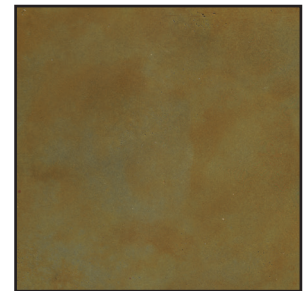
Buckwheat



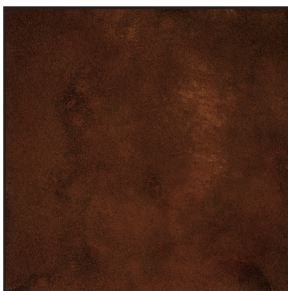
Copper



Cocoa



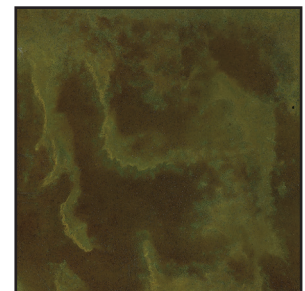
Amber



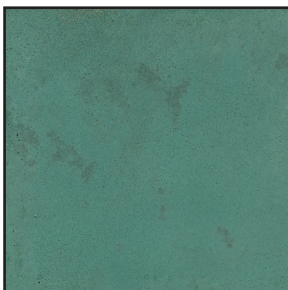
Rustic



Kodiak



Fern



Bluegrass



Graphite



Blackfoot

**Blue and green stains are not recommended for exterior applications. These stains react more strongly to moisture and can create an undesired black, spotty effect.*

PRODUCT NOTE: INNOTECH CHEMICAL STAIN can be used in conjunction with the following INNOTECH products - COLOR HARDENER†, INTEGRAL COLOR - EX†, INTEGRAL COLOR - SG†, RESURFACER†, SELF LEVELER†, MICRO-TOPPING†, LIQUID DYE CONCENTRATE†, and STAMPABLE OVERLAY†.

PRODUCT SYSTEM: INNOTECH CHEMICAL STAIN is part of an INNOTECH STAINING SYSTEM. For best results the use of INNOTECH CON-CLEAN†, INNOTECH CONCRETE DEGREASER & NEUTRALIZER†, INNOTECH Sealers and Finish Coatings are recommended. To achieve softer colors, INNOTECH CHEMICAL STAIN may be diluted with INNOTECH CHEMICAL STAIN DILUTION LIQUID†. INNOTECH CHEMICAL STAIN may also be diluted with water, not exceeding a 1:1 ratio. Over-dilution can weaken reaction of the stain. If the necessary dilution exceeds a ratio of 1:1, dilute with only INNOTECH CHEMICAL STAIN DILUTION LIQUID†.

Chemical Stain

INNOTECH CHEMICAL STAIN† produce surfaces with rich and variegated finishes. Instead of covering the concrete like paints or coatings, chemical stains infuse color into the surface while showcasing characteristics of the substrate. The translucent effects and the broad drifts in color—considered trademarks of chemical stains—giving surfaces the appearance of a timeworn patina finish.

Product Information

INNOTECH CHEMICAL STAIN...

- Is a combination of metallic salts in a water-based solution that is slightly acidic, this creates a reaction with the free lime available with concrete that has fully cured. Stains etch and penetrate new or existing concrete that is free from sealers, paints, and other forms of resists. Stains form permanent precipitates, becoming part of the concrete. Color remains in the concrete pores so color won't crack, chip, peel or fade.
- Does not "cover up" the concrete surface but rather works in conjunction with the character of the substrate. INNOTECH CHEMICAL STAIN produces a variegated finish, an "old world" surface effect, similar to the patination of bronze or the natural oxidation of copper. The broad drifts of color and mottled surface effects are not considered defects but rather architectural identifiers of this concrete coloring method. (INNOTECH CHEMICAL STAIN is reactive by nature. Stains are not paints or coatings, and are therefore pigment-free.)
- Is available in twelve standard colors which create expanses of rich color and marbleized hues from plain, gray concrete.
- Can be applied inside or outside to walkways, driveways, pool decks, patios, plazas, street pavements and more.
- Can be used to expand the color palette on new projects . Use over all of the following INNOTECH products: COLOR HARDENER†, MICRO-TOPPING†, RESURFACER†, SELF LEVELER†, STAMPABLE OVERLAY†, INTEGRAL COLOR - EX†, and INTEGRAL COLOR - SG† colors to further enhance the tone of colored concrete. To produce enhanced and richer effects, white-based INNOTECH COLOR HARDENER† and INNOTECH MICRO-TOPPING† can be excellent base choices for the application of INNOTECH CHEMICAL STAIN.
- Create broad artistic potential. Utilize an experienced contractor or artisan for installations of INNOTECH CHEMICAL STAIN and other decorative concrete products.

Product Limitations

The standard INNOTECH CHEMICAL STAIN colors on this chart are shown applied to gray base cement that has been hand trowelled smooth. INNOTECH CHEMICAL STAIN produces effects unique to each individual substrate and may differ greatly from the samples provided on this color chart. INNOTECH CHEMICAL STAIN will produce a wide range of finished colors depending on many factors including, but not limited to, finishing techniques, mix design, curing practices, base color, surface porosity, sealer use, and age and condition of existing concrete slabs. There is an element of uncertainty and unpredictability inherent in the use and final appearance of INNOTECH CHEMICAL STAIN including uneven, mottled or translucent effects. Concrete that has been extremely hard-trowelled may be difficult to stain. Before applying stain, it is strongly recommended the stain be tested in an inconspicuous area and that a sample is done prior to application. *Please reference the INNOTECH CHEMICAL STAIN Technical Bulletin for detailed information on application methods, technical specifications and product limitations.*

Maintenance

All installations should be maintained on a routine basis with the use of INNOTECH maintenance products to ensure the preservation of a high-quality, long-lasting surface. Maintenance schedules will vary depending on a number of factors, including volume and intensity of traffic, ultraviolet light exposure, geographical location and weather conditions. Resealing will be required periodically, depending on the amount of foot traffic. As with any other surface treatment, the lifetime of this product is dependent on the care it is given. Interior applications should be maintained using INNOTECH INTERIOR FLOOR FINISH or INNOTECH NATURAL BEAUTY. The use of a qualified flooring maintenance contractor is recommended for resealing, especially in commercial applications. *Please reference the "INNOTECH SEALER AND MAINTENANCE PRODUCT GUIDE" to determine the correct sealer for a specific application.*

†PLEASE REFER TO CORRESPONDING TECHNICAL BULLETIN FOR PRODUCT AND APPLICATION DATA.

INNOTECH CHEMICAL STAIN and other INNOTECH products are for professional use only.

INNOTECH products can be purchased at:

