

UV STABLE
CREATED FOR INTERIOR AND
EXTERIOR APPLICATIONS



Golden Rod



Red Cedar



Savanna



Harvest



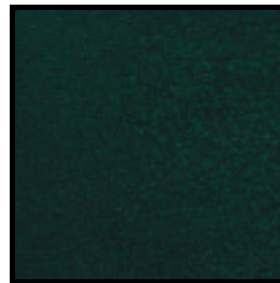
Coffee



Sagebrush



Mediterranean



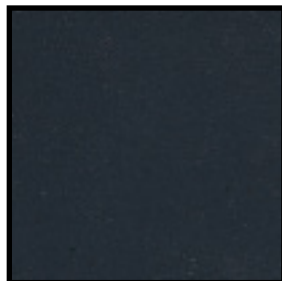
Evergreen



Mojave



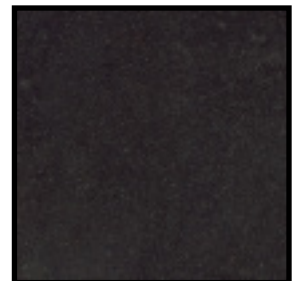
Hickory



Nebula



Spanish Slate



Charcoal

PRODUCT NOTE: INNOTECH® COLOREASY can be used in conjunction with the following INNOTECH products - COLOR HARDENER†, INTEGRAL COLOR - EX†, INTEGRAL COLOR - SG†, MICRO-TOPPING†, LIQUID DYE CONCENTRATE†, and STAMPABLE OVERLAY†.

ColorEasy

INNTECH COLOREASY can convert plain gray concrete into beautiful decorative concrete without the harsh chemical, the labor intensive process and the expense of acid staining. INNTECH COLOREASY is a concentrated stain that dilutes in acetone.



Product Information

INNTECH COLOREASY...

- Can convert plain gray concrete into beautiful decorative concrete without the harsh chemical, the labor intensive process and the expense of acid staining.
- Can be applied and sealed in the same day, minimizing down time, when the surface is properly prepared.
- Have semi-transparent properties allow the variations in the substrate to enhance the final look.
- Is available in 13 standard colors which can be combined to expand the color palette or create faux finishes.
- Can be mixed together to make many other additional colors or expand the color selection.
- Can be applied inside or outside to walkways, driveways, pool decks, patios, plazas, street pavements and more.
- Can be used to expand the color palette on new projects . Use over any INNTECH COLOR HARDENER†, INNTECH MICRO-TOPPING†, INNTECH STAMPABLE OVERLAY†, INNTECH INTEGRAL COLOR - EX†, and INNTECH INTEGRAL COLOR - SG† colors to further enhance the tone of colored concrete. To produce enhanced and richer effects, white-based INNTECH COLOR HARDENER† and INNTECH MICRO-TOPPING† can be excellent base choices for the application of INNTECH COLOREASY.
- Create broad artistic potential. Utilize an experienced contractor or artisan for installations of INNTECH COLOREASY

Maintenance

All installations should be maintained on a routine basis with the use of INNTECH maintenance products to ensure the preservation of a high-quality, long-lasting surface. Maintenance schedules will vary depending on a number of factors, including volume and intensity of traffic, ultraviolet light exposure, geographical location and weather conditions. Resealing will be required periodically, depending on the amount of traffic. As with any other surface treatment, the lifetime of this product is dependent on the care it is given. The use of a qualified flooring maintenance contractor is recommended for resealing, especially in commercial applications. *Please reference the "INNTECH SEALER AND MAINTENANCE PRODUCT GUIDE" or contact a Customer Service Associate to determine the correct sealer for a specific application.*

†PLEASE REFER TO CORRESPONDING TECHNICAL BULLETIN FOR PRODUCT AND APPLICATION DATA.

INNTECH COLOREASY and other INNTECH products are for professional use only.

INNTECH products can be purchased at:

CHROMASCAPE

orders: service@chromascape.com • 888.421.0010